



HCRMA Board of Directors

Randy Sweeten, Chairman
Josue Reyes, Vice-Chairman
Ricardo Perez, Secretary/Treasurer
Aquiles J. Garza Jr., Director
R. David Guerra, Director
Forrest Runnels, Director
Alonzo Cantu, Director

HCRMA Staff

Pilar Rodriguez, PE, Executive Director
Ramon Navarro IV, PE, CFM, Construction Engineer
Celia Gaona, CIA, Auditor/Compliance Officer
Jose Castillo, Chief Financial Officer
Carlos “CJ” Moreno, Jr., Acquisition Coordinator
Flor E. Koll, Program Administrator
Sergio Mandujano, Construction Records Keeper

Program Management Consultant
DANNENBAUM ENGINEERING CORP

PMC/GEC STATUS REPORT (05/2016)

1. Review: PMC Invoice
2. Status: Systemwide Tasks
3. Status: SH 365 Project
4. Status: IBTC Project
5. Status: OW/OS Corridor
6. Status: Constr. Cost Trends

PMC Invoice Overview

(Active WA's: 05/2016 Invoice)

Task (Current Billing)	WA 9 3/1/14 - 6/30/18	WA 16 5/28/14-01/31/16	WA 20 12/17/15-03/30/16	WA9 - WA20 3/1/14 - 6/30/18
Program Management Consultant	\$ 167,116	\$ -	\$ -	\$ 167,116
Project & Systemwide Mgt	\$ 167,116	\$ -	\$ -	\$ 167,116
Construction Mgt	\$ -	\$ -	\$ -	\$ -
General Engineering Consultant (Tasks on Behalf of the Agency)	\$ -	\$ -	\$ 50,912	\$ 50,912
Analyzing Documentation	\$ -	\$ -	\$ -	\$ -
Building Agency	\$ -	\$ -	\$ -	\$ -
Strategic Planning	\$ -	\$ -	\$ 50,912	\$ 50,912
Public Outreach	\$ -	\$ -	\$ -	\$ -
Advance Planning	\$ -	\$ -	\$ -	\$ -
Total for All Tasks:	\$ 167,116	\$ -	\$ 50,912	\$ 218,028

Firm (Current Billing)	WA 9 3/1/14 - 6/30/18	WA 16 5/28/14-01/31/16	WA 20 12/17/15-03/30/16	WA9 - WA20 3/1/14 - 6/30/18
Dannenbaum Eng Corp.	\$ 157,116	\$ -	\$ -	\$ 157,116
Direct Labor: Pathfinder	\$ 10,000	\$ -	\$ -	\$ 10,000
Direct Labor: George Ramon	\$ -	\$ -	\$ -	\$ -
Sub: Aranda and Assoc. (DBE)	\$ -	\$ -	\$ -	\$ -
Sub: Blanton & Assoc. (DBE)	\$ -	\$ -	\$ -	\$ -
Sub: C&M Associates (DBE)	\$ -	\$ -	\$ 50,912	\$ 50,912
Sub: RODS SUE (DBE)	\$ -	\$ -	\$ -	\$ -
Sub: UNINTECH (DBE)	\$ -	\$ -	\$ -	\$ -
Sub: CSE (DBE)	\$ -	\$ -	\$ -	\$ -
Total for All Firms:	\$ 167,116	\$ -	\$ 50,912	\$ 218,028

PMC Invoice Overview (Active WA's: Earned to Date)



DANNENBAUM – PROGRAM MANAGER

Task (Earned to Date)	WA 9 3/1/14 - 6/30/18	WA 16 5/28/14-01/31/16	WA 20 12/17/15-03/30/16	WA9 - WA20 3/1/14 - 6/30/18
Program Management Consultant	\$ 5,596,433	\$ -	\$ -	\$ 5,596,433
Project & Systemwide Mgt	\$ 5,596,433	\$ -	\$ -	\$ 5,596,433
Construction Mgt	\$ -	\$ -	\$ -	\$ -
General Engineering Consultant (Tasks on Behalf of the Agency)	\$ -	\$ 193,327	\$ 111,224	\$ 304,550
Analyzing Documentation	\$ -	\$ -	\$ -	\$ -
Building Agency	\$ -	\$ -	\$ -	\$ -
Strategic Planning	\$ -	\$ -	\$ 111,224	\$ 111,224
Public Outreach	\$ -	\$ -	\$ -	\$ -
Advance Planning	\$ -	\$ 193,327	\$ -	\$ 193,327
Total for All Tasks:	\$ 5,596,433	\$ 193,327	\$ 111,224	\$ 5,900,983

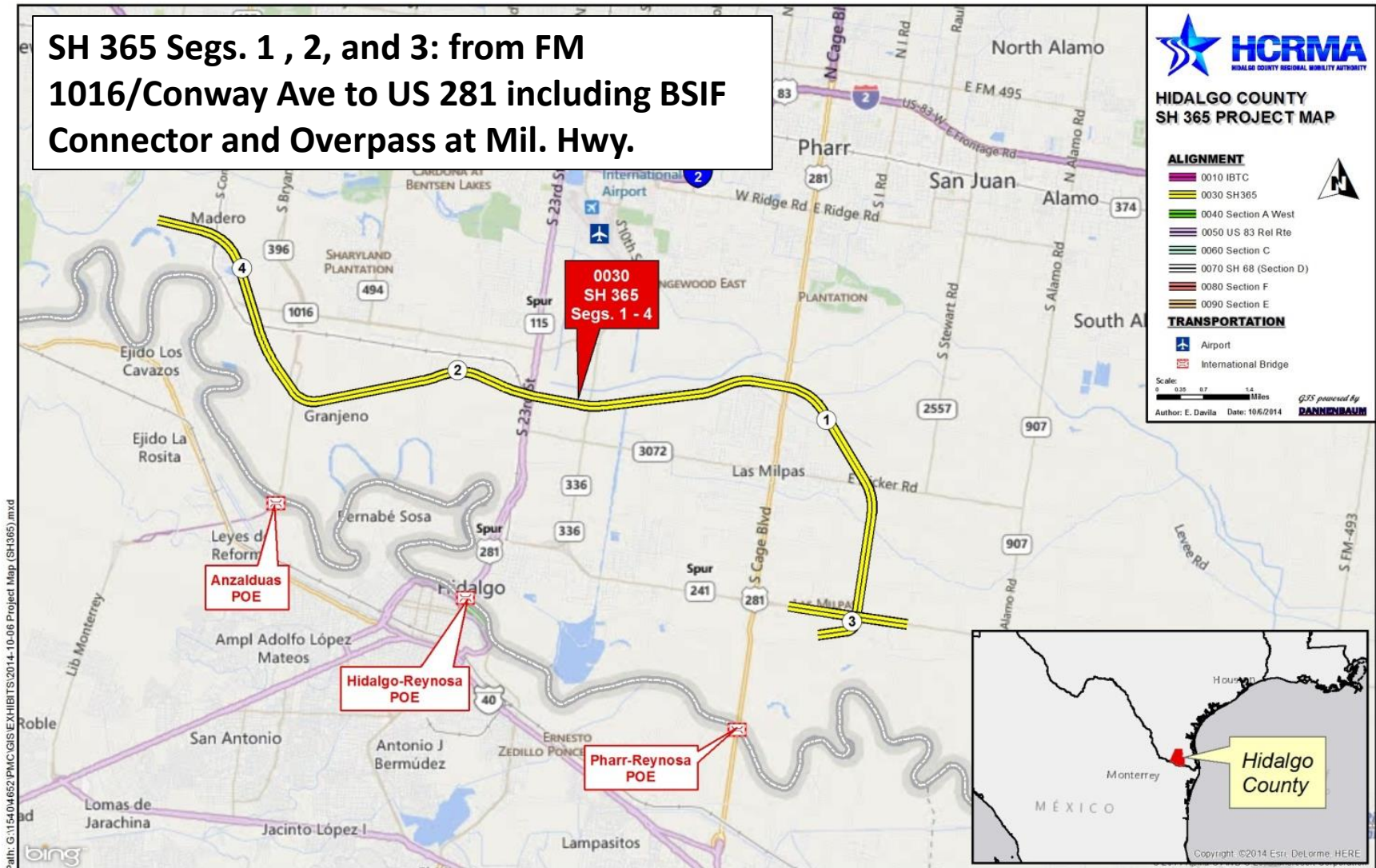
Firm (Earned to Date)	WA 9 3/1/14 - 6/30/18	WA 16 5/28/14-01/31/16	WA 20 12/17/15-03/30/16	WA9 - WA20 3/1/14 - 6/30/18
Dannenbaum Eng Corp.	\$ 4,492,313	\$ -	\$ -	\$ 4,492,313
Direct Labor: Pathfinder	\$ 270,000	\$ -	\$ -	\$ 270,000
Direct Labor: George Ramon	\$ 179,400	\$ -	\$ -	\$ 179,400
Sub: Aranda and Assoc. (DBE)	\$ 435,520	\$ -	\$ -	\$ 435,520
Sub: Blanton & Assoc. (DBE)	\$ 219,200	\$ -	\$ -	\$ 219,200
Sub: C&M Associates (DBE)	\$ -	\$ -	\$ 111,224	\$ 111,224
Sub: RODS SUE (DBE)	\$ -	\$ -	\$ -	\$ -
Sub: UNINTECH (DBE)	\$ -	\$ -	\$ -	\$ -
Sub: CSE (DBE)	\$ -	\$ 193,327	\$ -	\$ 193,327
Total for All Firms:	\$ 5,596,433	\$ 193,327	\$ 111,224	\$ 5,900,983

■ PMC WA 9

- Managed/met/reviewed all development efforts done by other HCRMA consultants for SH 365 and IBTC.
- Provided support to Staff for landowner coordination, meetings with stakeholders, in addition to Staff support for ROW document preparation, contract document support, and document control.
- Construction Management tasks include
 - US 281 / BSIF construction and document control systems created (Appia and ProjectWise) for coordination with the Contractor and TxDOT.
 - Managing RFI, submittals, shop drawing reviews, and supporting logging of testing and inspection in coordination with HCRMA Construction Engineer and Records Keeper (including SW3P inspections, etc.).

- **PMC WA 9 Cont.**
 - Continued to provide support to HCRMA Staff and Legal Counsel reviews of 365 TOLL PDA.
 - Merging PS&E sets from L&G and S&B into one cohesive plan set.
- **PMC WA 16**
 - Offsite Hydrologic Studies are 99% complete by Civil Systems Engineers (Deren Li) for eventual use on HCDD#1 Outfall Improvements.
 - Pending final report from CSE (SH 365 Seg. 3 is final and delivered to HCDD#1 for developing those outfalls) in order to coordinate the construction of outfalls for SH 365 Seg. 1 & 2.
 - Continued follow-up with HCDD#1 for SH 365 Seg 1 & 2 Outfall Development.

Project Overview for SH 365







Project Schedule for SH 365



SH 365 / US 281 Improvements - Phase I (Segment 3)

(US 281 / Mil. Hwy. from SP600 / Cage Blvd. to FM 2557 / Stewart Rd and the BSIF Connector)

	WORK TASK	2015												2016											
		Jan	Feb	Mar	Apr	May	Jun	Jul	Aug	Sep	Oct	Nov	Dec	Jan	Feb	Mar	Apr	May	Jun	Jul	Aug	Sep	Oct	Nov	Dec
	Env. Clearance (FONSI)																								
	Final Design (Complete)																								
	ROW Acquisition (Complete)																								
	Utility Relocation																								
	Constr. Bid Opening (Letting)																								
	Construction Starts																								

CONSTRUCTION FOR SH 365 PHASE I: FROM 02/01/2016 TO 09/30/2017

SH 365 - Phase II (Segments 1 & 2)

(FM 396 / Anzalduas Hwy. to US 281 / Military Hwy)

	WORK TASK	2015												2016																
		Jan	Feb	Mar	Apr	May	Jun	Jul	Aug	Sep	Oct	Nov	Dec	Jan	Feb	Mar	Apr	May	Jun	Jul	Aug	Sep	Oct	Nov	Dec					
	Env. Clearance (FONSI)							◆																						
	Final Design																													
	ROW Acquisition Phase																													
	Utility Relocation																													
	Constr. Bid Advertisement																			◆										
	Constr. Bid Opening (Letting)																					◆								
	Construction Starts																								◆					

CONSTRUCTION FOR SH 365 PHASE II: FROM 12/15/2016 TO 6/16/2019

■ Design

- PS&E on SH 365 Segment 3 (US 281/BSIF) is 100% complete.
- PS&E on SH 365 Segments 1 and 2 are 95% complete.
- All requested subsurface utility exposures are 100% complete.
- Geo-technical for SH 365 Segment 3 (US 281) is 100% complete.
- Geo-technical for SH 365 Segments 1 and 2 are 100% complete.
- Onsite Hydrologic Studies for SH 365 Segments 1, 2, and 3 are 100% complete.

■ ROW Mapping / Acquisition

- ROW Maps and Parcels for Segments 1 & 2 delivered to ROW team.
- Most appraisals completed, save for a few new levee parcels, along parcels modified for whole parcel takings, and in places where updated title information has become available.
- Land acquisition ongoing throughout entire corridor from Anzalduas Bridge to US 281 Military Highway.

■ Utility Relocations

- Major utilities have been coordinated with and held kick-off meetings with said owners (cities, private utilities, irrigation districts, etc.).
- As ROW is acquired PMC has examined possibility of releasing utility relocation agreements.

■ Environmental

– USIBWC

- The Texas State Historical Commission has completed environmental review of the USIBWC Construction License.

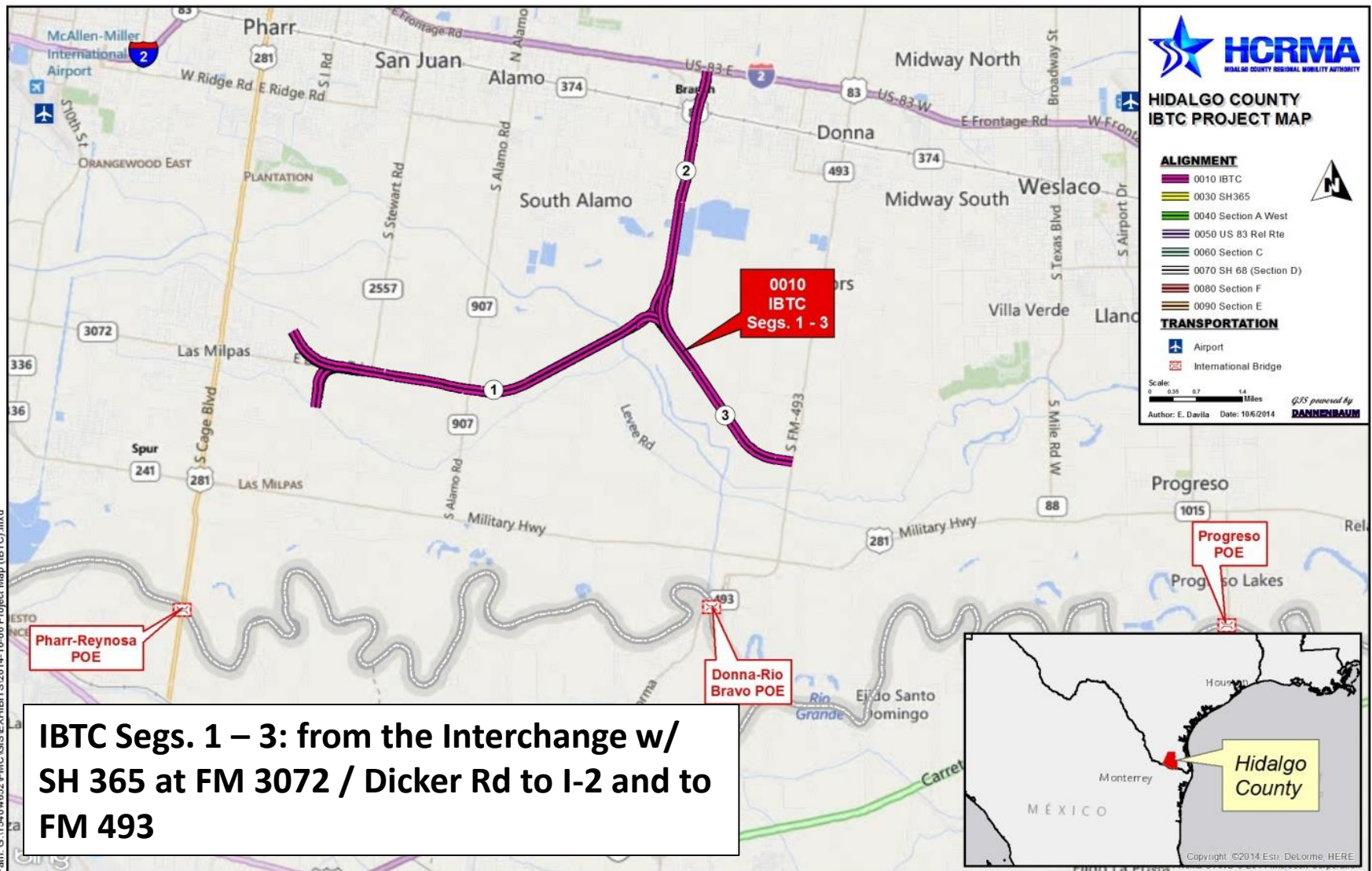
– USACE 404 Permit & Wetland Mitigation Plan

- Permit public comment period closed April 25, 2016.
- Three comments received and are being addressed.
- Survey of the proposed wetland mitigation site is complete and after the mitigation plan is approved an offer will be prepared.
- Executed USACE 404 Individual Permit anticipated within 60 days.

– SH 365 Site 26 - Soil and Groundwater Management Plan

- TxDOT provided comments and the document is finalized

Project Overview for IBTC



IBTC - Segments 1-3																												
(From Dicker Rd. Interchange to end of the Floodway North to I-2 & from Valleyview Interchange to FM 493)																												
WORK TASK	2015				2016												2017											
	Sep	Oct	Nov	Dec	Jan	Feb	Mar	Apr	May	Jun	Jul	Aug	Sep	Oct	Nov	Dec	Jan	Feb	Mar	Apr	May	Jun	Jul	Aug	Sep	Oct	Nov	Dec
Environmental																												
Final Plans																												
ROW Acquisition																												
Utility Relocation																												
Constr. Bid Opening (Letting)																												
Construction Starts																												
CONSTRUCTION FROM 06/2017 TO 11/2019																												

Proposed Revised Schedule:

- Contingent upon Board direction
- Funding considerations
- Clearing environmental in order to get project closer to shovel readiness

■ Design

- PS&E for IBTC Segments 1 - 3 are 40 to 60% complete.
- Geo-technical borehole efforts are on pause for IBTC Segments 1-3.
- Onsite Hydrologic Studies for IBTC have been reviewed and are being finalized.
- Subsurface Utility Exposures are 100% complete.

■ Environmental

- A Phase II ESA was completed on the Donna Reservoir-IBTC footprint, final lab results indicate no PCB contamination is present within the proposed ROW.
- As directed by the Executive Director the PMC is exploring options to expedite the environmental clearance of the IBTC project.
- IBTC Right-of-Entry forms are being updated to reduce any delays to environmental fieldwork.

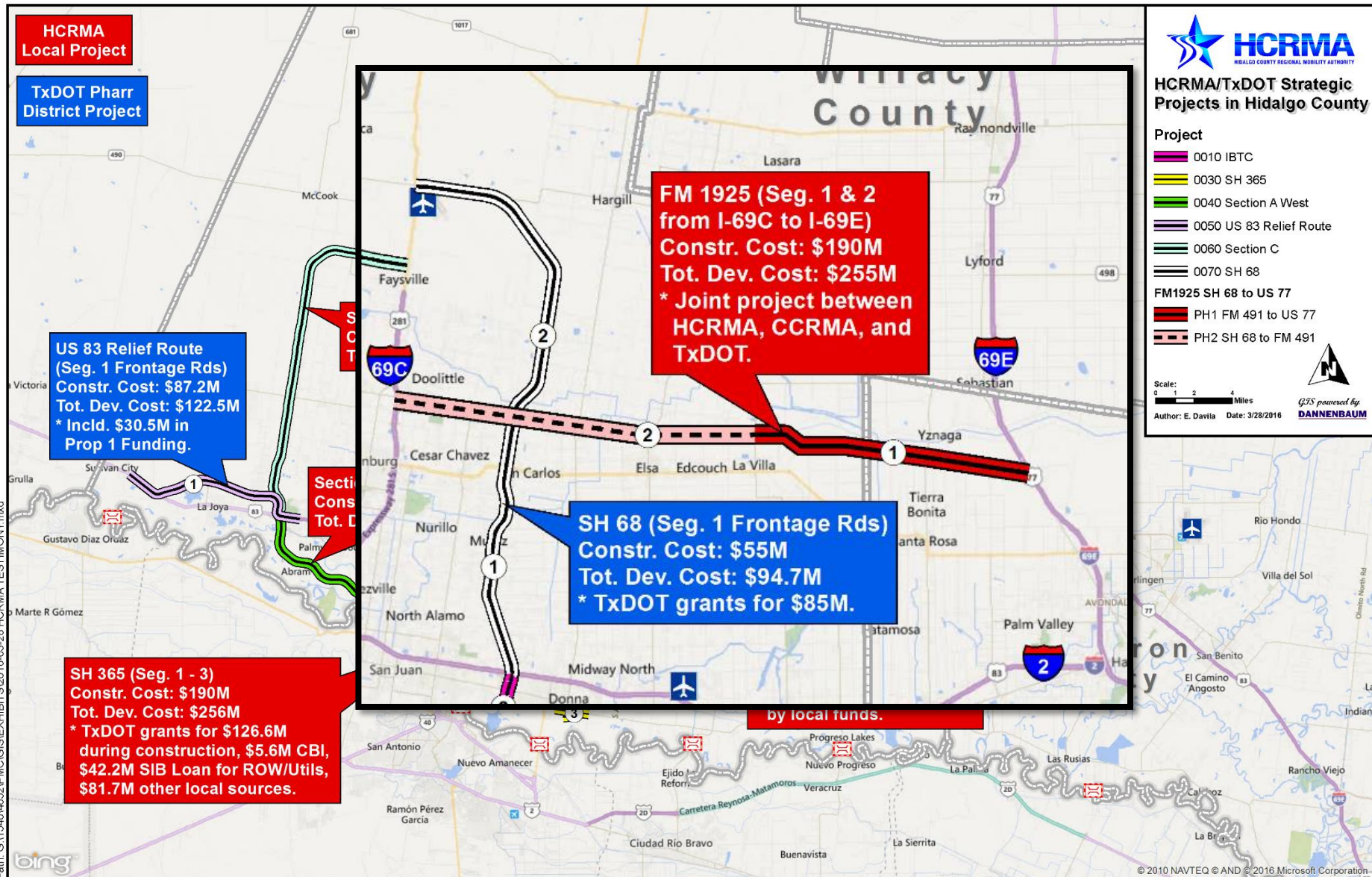
■ ROW Mapping

- Strip map for complete IBTC project is complete for the entire project, as well as all ETT-easement parcels completed.

■ ROW Acquisition

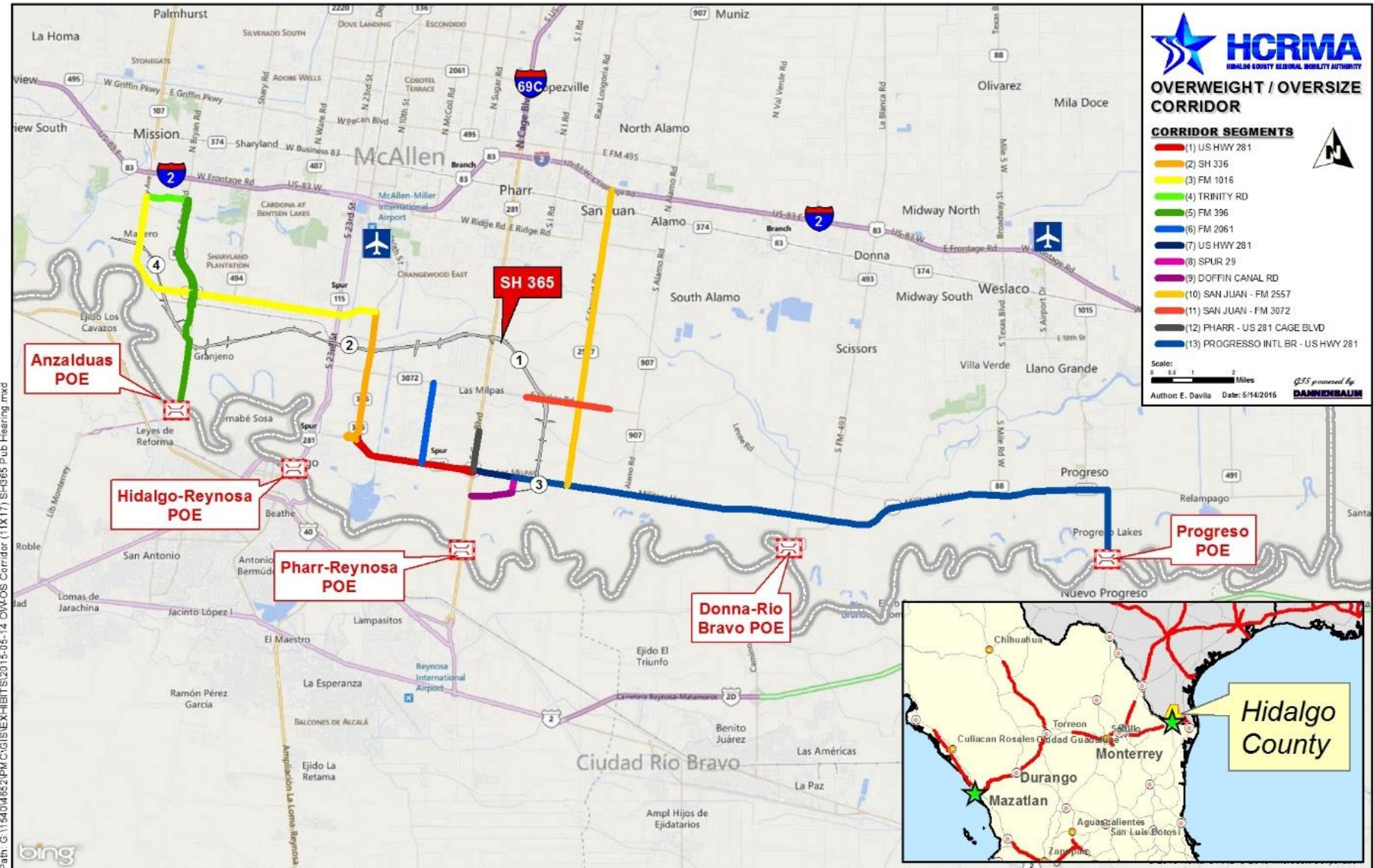
- All parcels north of Donna Reservoirs have been submitted to the ROW Acquisition Team.
- Early acquisition is nearing completion for the AEP/ETT local project ROW for the transmission line (4 parcels remain at various stages of closure).

HCRMA Planning Efforts



- **FM 1925 (from I69C to I-69E)**
 - TxDOT Committed Supplemental Development Authority Funds for the Entire 27 Mile Corridor as an expressway facility.
 - TxDOT has committed to funding the Schematic Design.
 - Cameron County has committed to funding the segment of FM 1925 from the eastern Hidalgo County Line to US 77 and ultimately to the South Padre Island 2nd access.
 - Interlocal between HCRMA and CCRMA is being finalized to complete the Environmental Documents.
 - Hidalgo County has recommended the HCRMA receive \$20M in Proposition 1 & 7 funds for the Right-of-Way and Construction of the segment of the project from FM 491 East to the Cameron County line.

Project Overview for Overweight/Oversize Corridor Permits



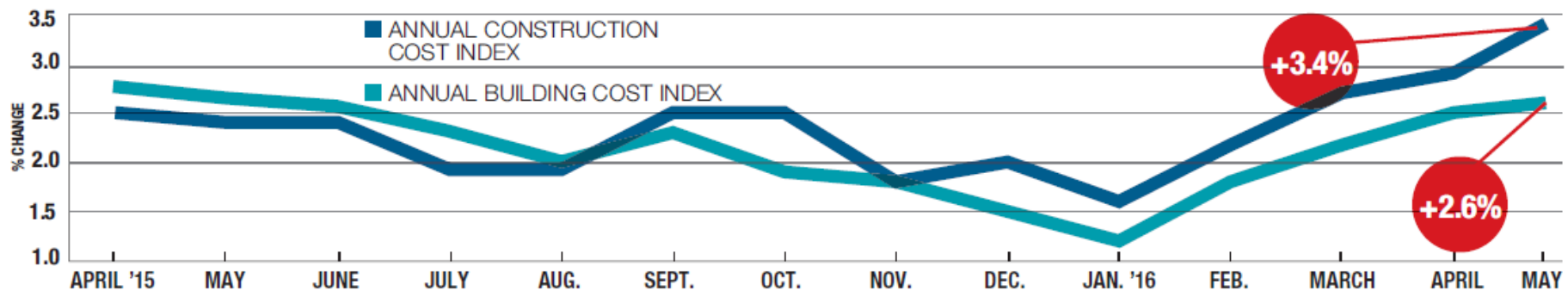
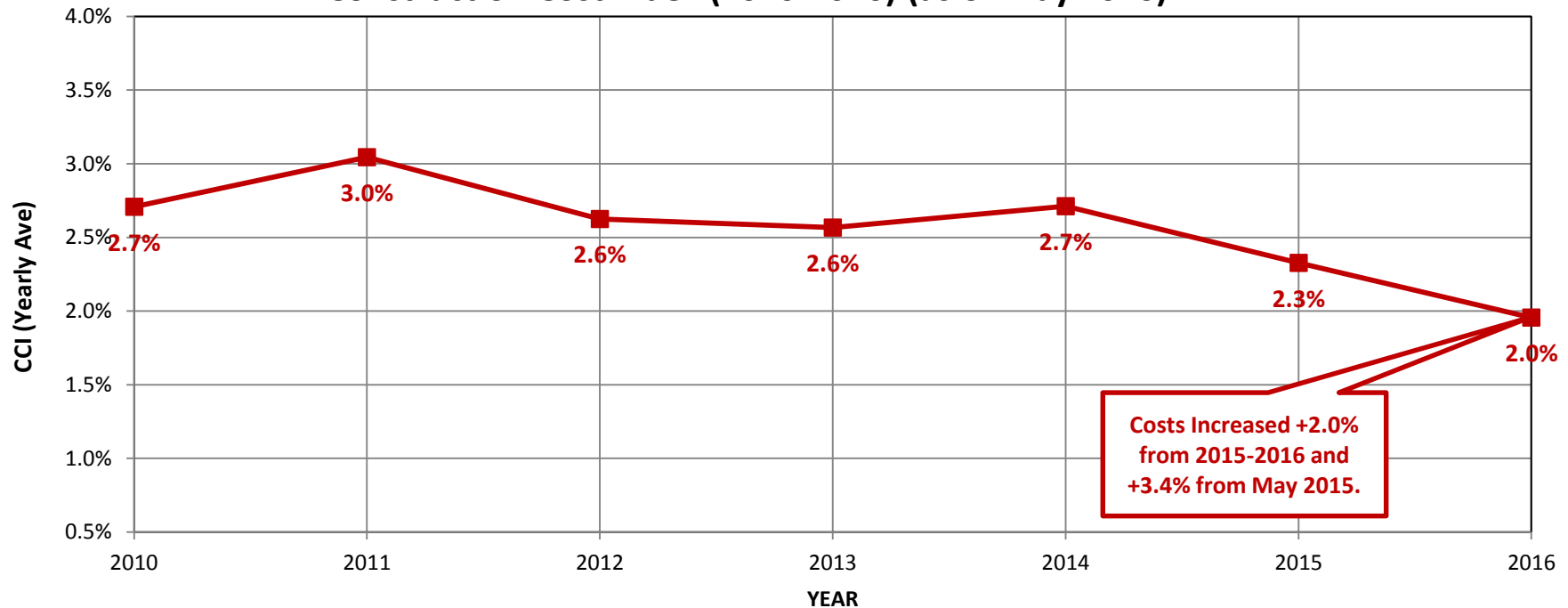
Overweight/Oversize Corridor Permits Report

From 01/01/2016 – 05/06/2016

Total Permits Issued:	8,789
Total Amount Collected:	\$ 722,368
▪ Convenience Fees (CC):	\$ 19,248
▪ Total Permit Fees:	\$ 703,120
– Pro Miles:	\$ 26,367
– TxDOT:	\$ 597,652
– HCRMA:	\$ 79,101

Construction Cost Index

Construction Cost Index (2010-2016) (as of May 2016) *Source: McGraw Hill Construction ENR*



Construction Cost Trends: Asphalt Paving Prices

- The 20-city average price for liquid asphalt has changed in 2016 as follows:
 - Price dropped -0.2% in May 2016
 - Price dropped -0.2% between May 2015 to May 2016



20-CITY AVERAGE

ITEM	UNIT	\$PRICE	%MONTH	%YEAR
ASPHALT PAVING				
PG 58	TON	396.51	-0.2	-0.2
Cutback, MC800	TON	373.31	-0.2	-0.8
Emulsion, RAPID SET	TON	344.76	-1.9	-2.5
Emulsion, SLOW SET	TON	362.29	-0.1	-0.7

PORTLAND CEMENT

Type one	TON	113.64	-0.6	-1.4
----------	-----	--------	------	-------------

MASONRY CEMENT

70-lb	BAG	8.56	+1.0	+0.1
-------	-----	------	------	------

CRUSHED STONE

Base course	TON	10.38	-0.1	-0.1
Concrete course	TON	10.72	-0.3	0.0
Asphalt course	TON	11.00	-0.1	-0.9

SAND

Concrete	TON	9.17	-0.3	-1.0
Masonry	TON	10.54	+0.2	-0.9

READY-MIX CONCRETE

3,000 psi	CY	110.01	+0.3	+2.2
4,000 psi	CY	114.32	+0.3	+2.2
5,000 psi	CY	120.59	0.0	+1.4

CONCRETE BLOCK

Normal weight: 8" x 8" x 16"	C	136.69	-4.4	-6.0
Lightweight: 8" x 8" x 16"	C	164.05	+5.2	+1.1
12" x 8" x 16"	C	175.34	+0.2	-1.5

Source: McGraw Hill Construction ENR